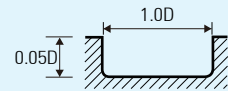
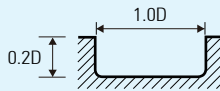


## [ WR514, WR542 series ]

피삭재	합금강, 탄소강		프리하든강		고경도강	
	Alloy Steels Carbon Steels (SCM, SNCM, S45C)		Prehardened Steels (NAK, CENA, KP4)		Hardened Steels (SKD, SKT, STAVAX)	
경도	~HRC35		HRC35~HRC45		HRC45~HRC55	
강도	~1100N/mm <sup>2</sup>		1100~1500N/mm <sup>2</sup>		1500~2000N/mm <sup>2</sup>	
외경(mm)	RPM	FEED	RPM	FEED	RPM	FEED
0.2	50,000	170	34,500	75	21,150	45
0.3	50,000	200	32,000	85	20,000	50
0.4	50,000	200	32,000	85	20,000	50
0.5	43,000	220	28,000	95	17,100	60
0.6	36,400	250	24,000	110	14,500	65
0.8	36,400	250	24,000	110	14,500	65
1.0	33,100	280	21,600	120	13,200	70
1.5	26,400	300	16,200	130	10,200	70
2.0	21,600	310	13,800	140	8,640	80
2.5	18,000	320	11,400	150	7,320	80
3.0	15,900	330	10,300	160	6,300	80
4.0	12,800	400	8,200	200	5,150	95
5.0	11,000	500	7,000	240	4,560	120
6.0	9,500	600	6,000	300	3,930	140
8.0	7,200	640	4,550	300	3,020	140
10.0	6,000	640	4,000	300	2,420	140
12.0	5,000	500	3,340	270	2,000	120
16.0	3,720	450	2,520	210	1,540	95
20.0	3,000	330	1,950	140	1,200	70

RPM = rev. / min.  
FEED = mm / min.



## [ WXR504 series ]

피삭재	합금강, 탄소강		프리하든강		고경도강	
	Alloy Steels Carbon Steels (SCM, SNCM, S45C)		Prehardened Steels (NAK, CENA, KP4)		Hardened Steels (SKD, SKT, STAVAX)	
경도	~HRC35		HRC35~HRC45		HRC45~HRC55	
강도	~1100N/mm <sup>2</sup>		1100~1500N/mm <sup>2</sup>		1500~2000N/mm <sup>2</sup>	
외경(mm)	RPM	FEED	RPM	FEED	RPM	FEED
1.0	27,600	300	18,000	220	11,000	120
1.5	22,000	310	13,500	230	8,500	120
2.0	18,000	320	11,560	240	7,200	130
2.5	15,000	330	9,500	250	6,100	130
3.0	13,240	340	8,560	260	5,280	130
4.0	10,720	420	6,820	300	4,300	140
5.0	9,160	430	5,800	360	3,800	170
6.0	7,900	430	5,040	360	3,280	170
8.0	6,000	460	3,800	360	2,520	170
10.0	5,040	460	3,280	360	2,020	170
12.0	4,120	360	2,780	320	1,680	140
16.0	3,100	280	2,100	230	1,280	115
20.0	2,520	230	1,640	180	1,000	90

RPM = rev. / min.  
FEED = mm / min.

